

Honeypot



STUDIO PROFILE | 2021

ABOUT US

Honeypot is a 6,000 square foot multifunctional studio accommodating the film, photography and private events industry.

Our dynamic layout, vaulted ceilings, exposed bow trusses, brick walls, and expansive natural light all form a dramatic composition that is admired by cinematographers, photographers, directors and planners alike.

Our layout consist of two interconnecting spaces on opposite sides of the building. While client lounge, storage, restrooms, kitchentte, craft area, are at the core of the building.

FEATURES

Dramatic backdrops
30' Vaulted ceilings
20' ceiling heights
Bow trusses
58' span ceiling trusses
Naturally lit
7 skylights
Black out capability
Exposed brick walls
Concrete floors
Ground floor entry
Easy vehicle drive-in
2 wide roll-up doors
Expansive floor space
Handicap Accessible

PRODUCTION

400 AMP/ 3 Phase
100 AMP cam lock
Air conditioning
Kitchenette
Large restrooms
WiFi
5 piece client lounge
Make up stations
Floor mirror
2 garment racks
Jiffy Steamer
Mobile craft station
8 folding tables
30 folding chairs
5', 8' & 20' ladders

INTERCONNECTING SPACES

| | |
|-----------------|------------|
| 12th st. studio | 3,000 sqft |
| Alley studio | 2,000 sqft |

Honeypot delivers a versatile white-canvas studio space ready to withstand any transformation, resulting in a sophisticated branded environment to attract, host and engage target audiences.

We take pride in being considered a Downtown premiere shooting location and event space by industry leading brands who continually seek us out for our reputation, unique aesthetic, design freedoms and location. All critical when contemplating all imperative elements needed for hosting a successful production shoot or private event

FILM &
PHOTOGRAPHY



PRIVATE EVENTS





12th st. studio - East view - 30' ceiling



12th st. studio - South view - 28' x 8' Display wall



12th st. studio - South view - walkway to the rear



12th st. studio - East view - 20' Ceilings



Restrooms & Kitchenette





12th st. studio - West view - Display boards



400 sqft multifunction space: client lounge, hair,make up and waredrobe area or catering
Fire doors close off the front & back spaces



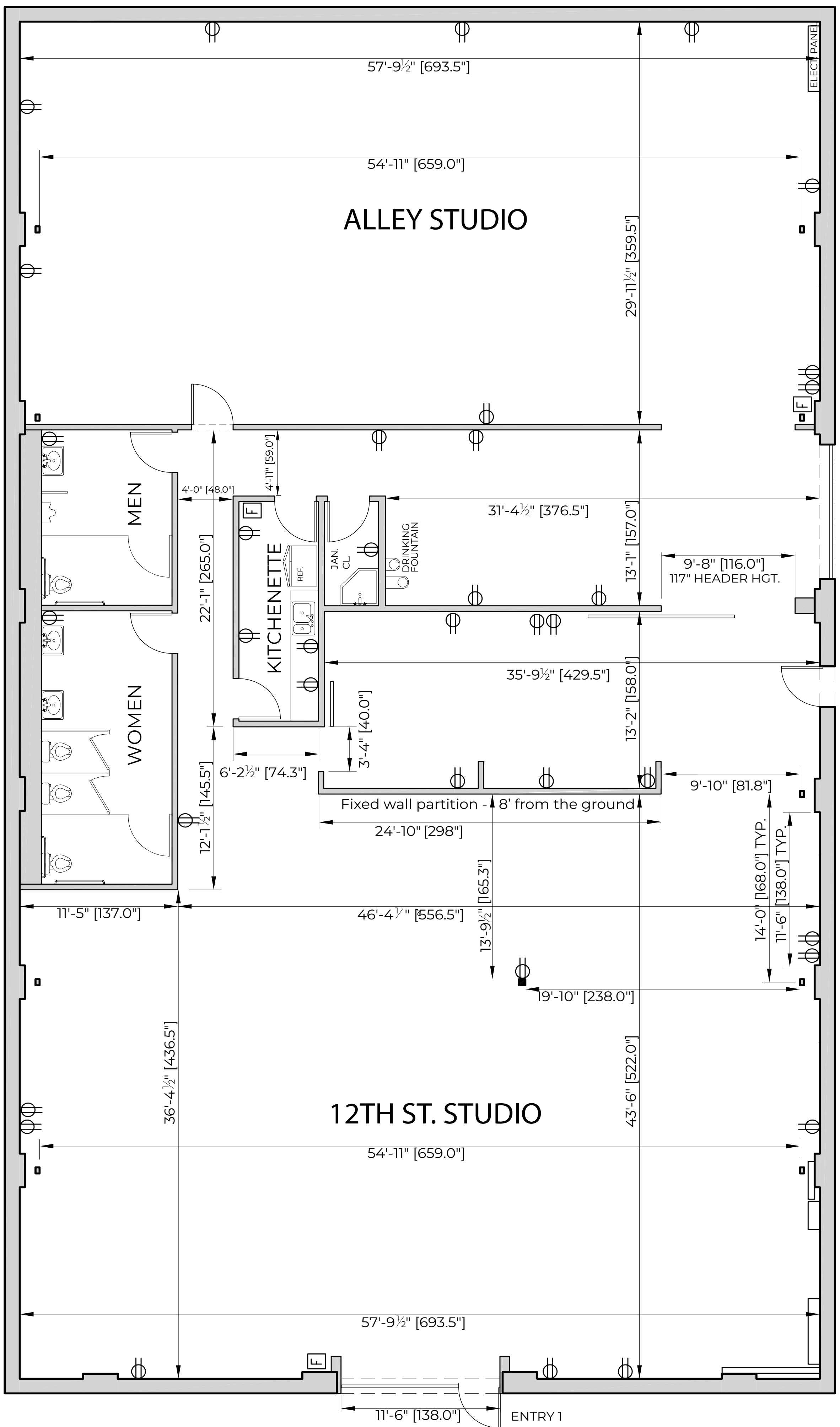
Transition from the front to the rear



Alley studio - East View



Alley studio -North View



WE'D LOVE TO HEAR FROM YOU

At Honeypot, we strive to be of service. Give us call - let us know what you have in mind.

Contact

213-769-8040
info@hnyptla.com

Visit us

212 West 12th street
Los Angeles, Ca. 90015

hnyptla.com

Follow Us

[Instagram](#)

THANK YOU FOR THE CONSIDERATION